

COMPANY PROFILE



Mechanical, Electrical + Fire Engineers and Project Managers



Suite 126, Midel Centre
Off Plot 14, Oladipo Diya Street
Gudu District, Abuja



www.apironconsults.ng

INTRODUCTION

APTRON CONSULTS LIMITED is an Indigenous Multi-disciplinary Engineering Consultancy & Services Company registered in 2013 under the Companies and Allied Matters Decree 1990 with Registration Number : RC 1115161.

The company specializes in the provision of Comprehensive Engineering Consultancy Services covering Rural Electrification, Environmental, Power Systems – transmission lines and power sub stations, Electrical/Electronics and Telecommunications, Mechanical, Air Conditioning and Ventilation Systems, Fire and Industrial Engineering Services for Domestic, Commercial, Educational, Health and Renewable Energy Solutions.

The services offered cover the carrying out of feasibility studies, planning, design and execution of technical and financial engineering surveys; detailed design, technical specifications and contract document preparation; project management and supervision services; commissioning of projects; development of operational formats and models and facilities management programs amidst other services.



APTRON CONSULTS LIMITED is a registered firm member of several professional/engineering bodies such as Association for Consulting Engineering in Nigerin (ACEN) - Reg. No. F575, Nigeria Society of Engineers (NSE) - Reg. No.318, and Council for the Regulation of Engineering in Nigeria (COREN) - Reg. No. EF 1502.

Apron Consults demonstrates in-depth capacity in project management in various areas covering the following:

- Project scoping, planning, scheduling and monitoring
- Project risk analysis, management and risk driver identification
- Stakeholder identification, analysis and involvement
- Organizational SWOT Analysis
- Project closure procedures
- Post project implementation review
- Project performance measurement and appraisal
- Resource allocation procedures
- Installation works
- Renewable Energy Systems, etc.



Project: House On The Rock
Location: Kaduna

EVIDENCE OF PREVIOUS SIMILAR PROJECTS

PROJECTS OFFERED



Project: Asaba Hotels
Location: Delta State

Aprtron Consults Ltd has been involved in the following projects:

A Hotel Development Projects

1. Asaba Hilton - Double Tree Hotel Project

Design and Construction Supervision: This includes Internal & External Lighting Systems complete with energy saving components, and Raw & Clean Power Systems. Fire Detection Systems, IP-Voice & Data Networking System, IP-CCTV Surveillance System, IP-Public Address System, Access Control System, 2 x 1250kVA 400V 50Hz Generating Sets, 2.5MVA/33/11kV Sub-station with associated Switchgears. Others are Plumbing, HVAC and Fire-fighting Systems. (on-going).

2. Guest House/Wellness Centre, Abuja

Design, supervision and installation of Mechanical & Electrical Engineering Services for the 17 - Room Guest House/Wellness Centre located at Maitama, Abuja. (Construction Completed).

3. Arewa Suites and Apartment, Abuja

Re-design and supervision of Mechanical & Electrical Engineering Services including Reverse Osmosis Water Treatment Plant, Fire-Fighting Systems, Plumbing Systems, Lighting & Power Distribution System, RMU, Transformers and Generator Back-up Systems .

PROJECTS OFFERED

B Health Care Facility

1. Resuscitate Hospital, Gwagwalada, FCT.

Design, Supervision & Installation of Electrical, Extra – Low Voltage Systems, Mechanical & Air-Conditioning Systems for a Special Ambulatory Clinic, Gwagwalada - Abuja comprising of patient wards, theatres, nursing stations, conference rooms, dialysis rooms, treatment rooms, etc And Supply of 300kV 11/0.415kV Transformer – (Construction Completed).

2. American Specialist Hospital for Women and Children, Abuja

Design review of Electrical & Mechanical Engineering Services for an EPC project including HVAC Systems, Plumbing Systems, Mains Intake, Emergency Power Back-UPS, etc. – (Review on-going).

3. NISA Premier International Hospital

Design review and Supervision of Electrical & Mechanical & HVAC Engineering Services in readiness for re-validation, and implementation using international design standards such as JCI, BS, NFPA, ASHRAE, etc. (Construction On going).

4. NISA Premier Hospital - Extension

Design and Supervision of Electrical & Mechanical Installation for the new Radiology Building containing MRI, CT Scans, X-Rays, Theatres, CSSD, Mamo, etc., at Jabi – Abuja. – (Project Completed)

5. Federal Medical Centre (FMC) Abuja

Design and Supervision of Electrical Services for the construction of a new Administrative and multi-purpose Auditorium for Messrs. Metrosource Ltd & Matrix 360 Ltd.



Project: Dialysis Centre of Resuscitate Hospital

Location: Abuja



Project: NISA Premier Hospital Extension

Location: Abuja

PROJECTS OFFERED

C Estate Development & Other Residential Projects

1. Brains & Hammers Estate – Life Camp, Abuja

Design and Supervision of External Electrical Power Distribution comprising of the following: 8nr 500kVA 33/0.415kV Step Down Transformers, 1nr 33kV Automated Switchgear Panel, 1nr 1250kVA 400V 50Hz Generating Set + 1n 640kVA 400V 50Hz Generating Sets, 5nr Ring Mains Units (RMU), Underground and Overhead feeder cables, etc for Brains & Hammers Estate, Life Camp – Abuja – (Project Completed).

2. Brains & Hammers Estate – Apo 1, 2 & 3 Abuja

Design and Supervision of External Electrical Power Distribution comprising of the following: 8nr 500kVA 33/0.415kV Step Down Transformers, 1nr 33kV Automated Switchgear Panel, 1nr 1250kVA 400V 50Hz Generating Set + 1n 640kVA 400V 50Hz Generating Sets, 5nr Ring Mains Units (RMU), Underground and Overhead feeder cables, etc for Brains & Hammers Estate, Apo – Abuja – (Installation Completed).

3. Brains & Hammers Estate – City Project, Life Camp

Design and Supervision of External Electrical Power Distribution comprising of the following: 4nr 500kVA 11/0.415kV Compact Sub-Station with associated underground cabling and distribution switchgears and dedicated synchronized 360kVA Generating Sets. – (Installation Ongoing).

4. Postal Heights Luxury Apartments, Abuja

Preliminary Conceptual Design of Electrical & Mechanical Engineering Services for Postal Heights 12 floor mixed apartments comprising of the following: Lighting Systems, Power Systems, 33kV Switchgear Panels, 11kV SF6 RMUs + Indoor Transformer Substations, Bus-bar Rising Mains & cables distributions, Generators, ICT Infrastructure, Video Door Entry System, CCTV Surveillance System, Public Address + EVAC System, HVAC System, Plumbing Systems, Fire Fighting System, Central Cooking Gas Distribution System, etc (Conceptual Designs Completed).

5. River-Park Estate, Abuja

Project Management and Supervision of installation of 33kV and 415V Overhead Lines, Distribution Transformers and other distribution accessories. (Project Completed).



Project: Brains & Hammers
Location: Life Camp
Abuja



Project: 33kV OVL
Brains & Hammers
Location: Abuja

PROJECTS OFFERED

D Commercial Development Projects

1. ABUCCIMA, Abuja

Design of Mechanical & Electrical Engineering Services for the proposed ABUCCIMA project comprising of Convention Centre/Trade Fair Complex, Hotel, Residential Apartments, Multi-level Car Parks, Leisure & Recreational Areas, Office Towers, etc. The design entails a 'GREEN' Solution for energy efficiency and sustainability with the use of Solar Energy, Rain & Grey Water Reclaim & Reuse.

2. Plastic Production & Water Processing Factory

Design of Mechanical and Electrical Engineering Systems for a production factory complete with all mechanical ventilating and extraction systems, drainage and filtration systems, lighting and security control systems, etc.

3. Eterna Filling Station – Aviation Village, Abuja (Solar Powered)

Design and Supervision of Electrical Engineering Services & Solar Powered Solution for Eterna Oil comprising of 5nr PMS dispensing pumps, 2nr AGO dispensing pumps, 1nr LPG dispensing pump, underground tanks, station building and other ancillary buildings.

4. Eterna Filling Station – Wuse 2, Abuja

Design and Supervision of Electrical Engineering Services for Eterna Oil comprising of 4nr PMS dispensing pumps, 1nr AGO dispensing pumps, 1nr LPG dispensing pump, underground tanks, station building and other ancillary buildings.

5. CBN - Delta State Polytechnic, Ogwashiukwu

Design and Supervision of Mechanical & Electrical Services for the construction of a 1000 Seater CBN Intervention Multi-Purpose Auditorium.

6. Eterna Filling Station – Kaduna

Design and Supervision of Electrical Engineering Services for Eterna Oil comprising of 4nr PMS dispensing pumps, 1nr AGO dispensing pumps, 1nr LPG dispensing pump, underground tanks, station building and other ancillary buildings.



Project: Eterna Filling Station



Project: Fire Detection & Suppression Systems Installations

Location: Envoy Hotel, Abuja

PROJECTS OFFERED

E Special Military Projects

1. UAV Storage Facility - YOLA

Design & Construction Supervision of Storage Facility for UAV – (Unmanned Aerial Vehicle) for Nigeria Airforce – NAF Base Yola (Completed August 2017)

2. Special Pilot Training Facility - YOLA

Design & Construction Supervision of Pilot Training Facility for Nigeria Airforce – NAF Base Yola (Completed July 2018)

F Aviation

Design of Electrical Engineering Services for the Proposed Obudu International Airport comprising: Terminal Building, Watch Tower, Control Tower, Fire Station, Offices, Maintenance Facilities, Apron & Runway/Taxi Way Facilities.



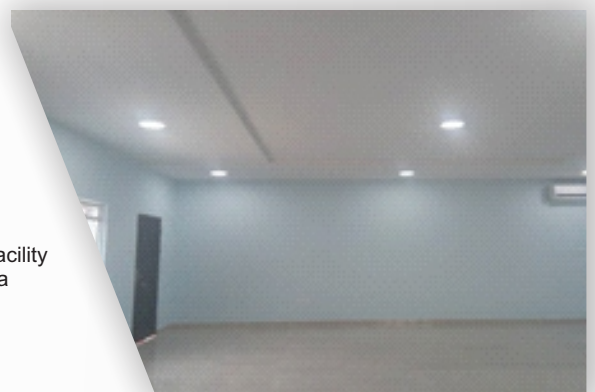
Project: Water Filtration & Treatment System Using Ozone Generator



Project: UAV Warehouse/Storage Facility
Location: NAF Base, Yola



Project: Pilot Training Facility
Location: NAF Base, Yola



PROJECTS OFFERED



Brains & Hammers, Apo



Brains & Hammers, Life Camp



33kV OVL: Brains & Hammers, Life Camp



630kVA 400V Gen Set for Brains & Hammers



11kV/415V Substation Yard



33/11kV Substation Yard

PROJECTS OFFERED



*33kV Switchgear Panels
at Brains & Hammers*



2500A Synchronizing Panel



1.0MVA 0.415kV/33kV Substation



*3x500kVA Genset
at Brains & Hammer Life Camp*

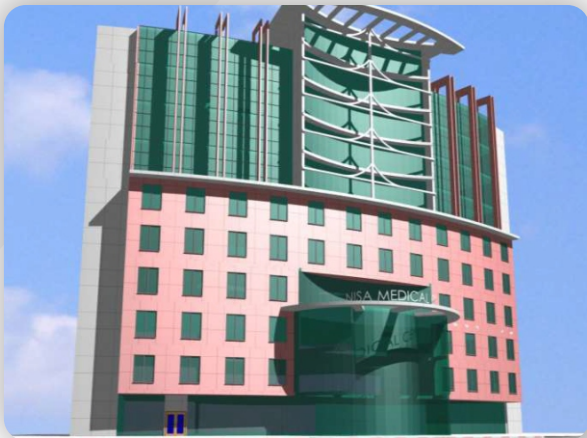


*Diesel Day Tanks
at Brains & Hammers*



Diesel-Fuel-Water Separator

PROJECTS OFFERED



NISA Medical Hospital, Abuja



Ongoing Work Progress at Proposed NISA Medical Hospital, Abuja



Ongoing Work Progress at Proposed NISA Medical Hospital, Abuja



HOTR Citadel Building



HOTR Kaduna Project



HOTR Citadel Building

PROJECTS OFFERED



Wuse 2 Office Project, Abuja



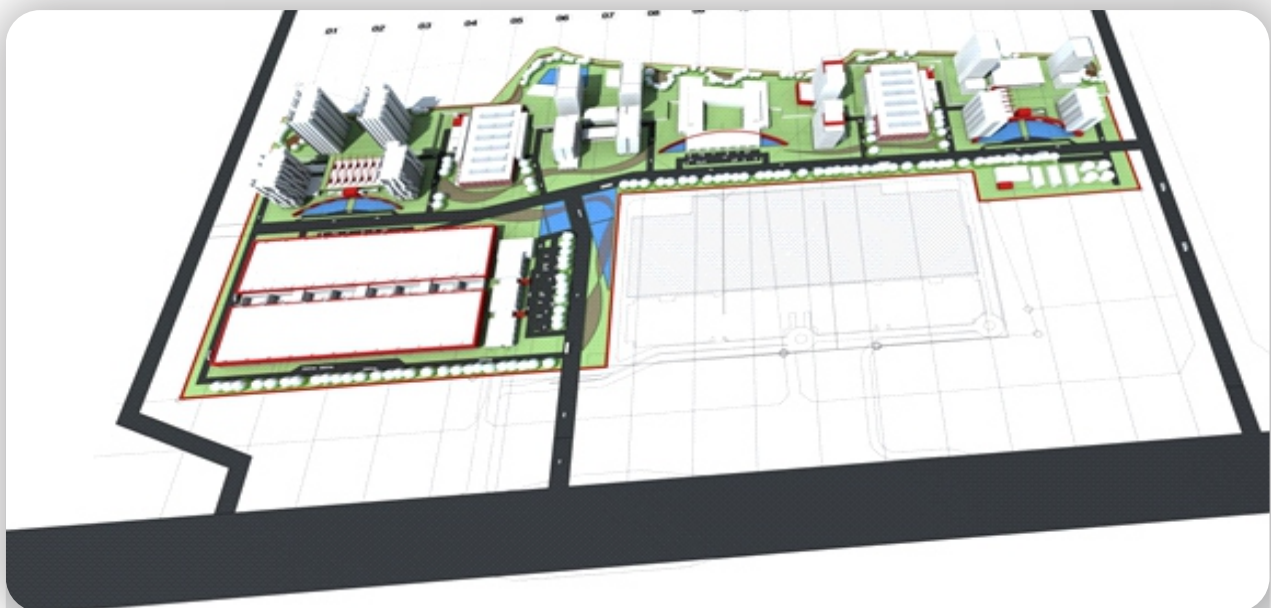
Proposed FERMA Corporate HQ Building



Utako – Boutique Hotel



Water Storage Systems & Boiler Installations



ABUCCIMA Project, Abuja



KEY PROFESSIONAL AND ADVISORY STAFF



Project: Postal Heights
Location: Abuja

ABOUT THE FOUNDER

A seasoned Professional Engineer, Sebastine OKONOFUA, heads the firm. He had his Engineering Education at the Ambrose Alli University, Ekpoma – Edo where he obtained a B.Sc (Hons) Degree in Electrical/Electronics Engineering. He had a successful service for one year with DBN Television acting as Programs/Production Coordinator, Master Control Room (MCR) Operator, Producer, Presenter, etc. Due to his diligence and servitude, he was offered an employment but decided to pursue a career in consulting engineering with Samabot & Associates Ltd, a firm of Chartered Consulting Engineers involved in the design, supervision and commissioning of engineering projects. By dint of hard work, he rose to become a Principal Engineer in Samabot & Associates Ltd.

He has been involved in several projects from design stage to the testing & commissioning stage.

He led the team in the design and supervision of Electrical Services Systems & Extra – Low Voltage Systems for the Petroleum Product Pricing & Regulation Agency (PPPRA) Abuja Head Office Building.

He was also involved in the preparation all the contracts documents from the designed stage through to tendering, appraisal, bidding, re-awards, procurement of Plants & Equipment, Factory Acceptance Tests of equipment and commissioning.

Engr. Sebastine OKONOFUA was among other Consultants who carried out Technical Survey/Feasibility Studies for the Federal Government of Nigeria under the Rural Electrification Agency (REA) for 25 LGAs in the Eastern States of the Nigeria.

ENGR. Sebastine OKONOFUA is a member of the Nigerian Society of Engineers (NSE), the Illuminating Engineering Society (IES), and Institute of Electrical & Electronics Engineers (IEEE). He is registered by The Council for the Regulation of Engineering in Nigeria (COREN) with Registration Number R.25529.

He has had several trainings within and outside Nigeria on the Design of various High, Medium and Low Voltage Electrical System & Extra Low Voltage Security Systems (CCTV Surveillance System, Access Control System, Fire Detection & Alarm System, IP – Voice & Data Networks, Public Address & Emergency Voice Evacuation System, etc.), with the use of various certified design softwares.

Together with other engineers, he started Apron Consults Ltd and they offer excellence in engineering services delivery from feasibility studies, designs, engineering economics to commissioning of completed engineering projects.

LIST OF OFFICE EQUIPMENT /PLANTS, ETC

PROFESSIONAL TESTING/OFFICE EQUIPMENT

1	PEAKTECH Digital Earth Resistance Tester	1nr
2	PEAKTECH AC/DC True – rms Clamp Meter	1nr
3	Fluke Industrial True – rms Multimeter with Temperature	1nr
4	Kyoritsu Insulation – Continuity Tester 3007A	1nr
5	Spectra Precision Laser Distance Meter	1nr
6	Nedo Walk Through Distance Meter	1nr
7	Kyoristu Fork Current Tester 2300R	1nr
8	Desktop Design Suites	3nr
9	Dell Laptops	2nr
10	Apple Mac book	1nr
11	HP Officejet 7500A Wide Format	1nr
12	HP Colour Laser jet CP5225	1nr
13	HP Scan jet 300	1nr
14	Kyoritsu Digital Light Meter 5202	1nr
15	Kyoritsu Digital Earth Tester	1nr
16	Baofeng Portable Two-way Radio	2nr
17	Pressure Buckets	1nr
18	Pressure & Temperature Sensors	1nr

PROFESSIONAL OFFICE DESIGN TOOLS/SUITES

1	AUTODESK - AUTOCAD DESIGN SOFTWARE
2	AUTODESK - REVIT
3	DIALUX LIGHTING DESIGN SOFTWARE
4	SCHNEIDER RAPSODY POWER DESIGN SOFTWARE
5	ABB e-DESIGN SOFTWARE



HEALTH, SAFETY & ENVIRONMENT (HSE) POLICY STATEMENT

ENVIRONMENT, HEALTH AND SAFETY POLICY STATEMENT

In the bid to proffer engineering consultancy services for prospective clients, **APTRON CONSULTS LTD** is committed to standardize and implement its operations in accordance to Environment, Health and safety principles with minimum and acceptable risks.

Whilst in the conduct of our activities, this policy shall be communicated through the firm as a strict guideline.

POLICY OBJECTIVE

This policy represents the appreciation of **APTRON CONSULTS LTD** to hazard reduction measures utilized in the management of a safe and workable environment for all its operations.

In accordance to this, APTRON CONSULTS LTD:

- Integrates the Environment, Health and Safety Management system within its business operations.
- Complies with national and practicable international standards and laws on Environment, Health and Safety for rendering professional services.
- Demonstrates leadership in Environment, Health and Safety responsibilities for all projects.
- Develops Environment, Health and Safety charter for unique projects.
- Critically reviews and assess all clients' Environment, Health and Safety standards before field services.
- Establish security and access controls for its premises and documents.
- Controls hazards associated with all tasks/processes/procedures to minimum and acceptable risk levels.
- Adopts applicable journey management guidelines in protocol activities.
- Communicates emergency exit plans with all within its premises for unforeseen occurrences.
- Conduct incident investigations/root-cause analysis for accidents aligned with Management of Change techniques.
- Has a workable crisis management plan.
- Trains and re-train all its employees periodically on Environment, Health and Safety matters that relates to respective job functions and workplace.



NIGERIAN CONTENT AND DEVELOPMENT PLAN

NIGERIAN CONTENT AND DEVELOPMENT PLAN

General

It is **APTRON CONSULTS LTD** Policy to comply with the Nigeria Content Directive of the FEDERAL REPUBLIC OF NIGERIA on local content. We lay significant emphasis on maximizing the Nigerian expertise in its growth, thereby supporting the economic development of the country. We are committed to the employment and training of Nigerian human resources as well as to the utilization of local material resources for the provision of goods and services to the Oil and Gas sectors except when after proper research, such services/facilities are not available in Nigeria.

Apron Consults Ltd is providing growing opportunities for Nigerian companies, SMEs, vendors, contractors and contract workers by engaging them in our projects. In addition, 100% of our employees are Nigerians, occupying various roles from senior Engineers to project Engineers. For many of our projects, we aim to recruit manpower from local communities and villages surrounding our project sites.

The main objectives of Apron Consults Ltd Nigerian Content Development Plan are:

- To maximize the presence of Nigerian companies when executing projects
- To utilize, as far as possible, local vendors and sub-contractors rendering services such as supply and installation of equipment and materials, supply of manpower, and other specialized services such as site surveys etc.
- To train, develop and retain skilled local manpower for Senior Management positions as well as Project Management Teams
- To train and develop unskilled manpower

As part of our commitment to stimulate the development of indigenous capabilities, Apron Consults Ltd invest a considerable amount of time, effort and resources to Training and we offer various programmes.

Apron Consults Ltd shall maintain the Nigerian Content Plan throughout its services. This Plan shall document all aspects of Company's strategy for achieving the minimum commitment to Nigerian Content in accordance with the policy and the Nigerian Content strategy hereunder.

The Plan shall include as details as following:

The Specific proposal is to domicile and be a corporate citizen, prioritize and maximize the use of Nigeria labour goods and services/equipment.

Scope of Work

The WORK to be performed shall include the provision of all necessary personnel, materials and equipment to carry out mechanical and electrical engineering services as may be directed by client.

This shall include but not be limited to the following:

- Development of Design Concept for Mechanical and Electrical Engineering Services, Detailed Design and Contract Documentations
- Vetting of contract documents/drawing to ensure conformity with specified scope and standards
- Conduct prequalification/financial bid evaluation report to select successful bidders (contractors) and recommend contractors to be awarded the project or locations
- Prepare guideline for post contract supervision
- General supervision to facilitate quality control and workmanships monitoring
- Prepare valuation and strategic statements
- Carry out Functional Tests
- Conduct Commissioning

Nigerian Content Planning

Nigerian Content Knowledge / Technology Transfer Plan

The whole essence of the Local Content Policy is to deliberately encourage the growth of indigenous capacities in Oil & Gas industry. The Nigerian Content, knowledge /technology transfer plan is aim at increasing of Nigerians in each project discipline / skill pool through training, exposure and certification thereby making them available for other major projects.

Effective ways of equipping staff for specialized functions or management responsibilities are recognized. Such techniques as placement with technical partners give participants the opportunity to learn by working alongside highly skilled colleague referred to on-the job training.

Nigerian Manpower Planning and Development & Maximization of Indigenous Employment

Apron Consults Ltd has designed Technology Transfer Programmes. These are in house programmes designed to impart knowledge and skills to our personnel. Many of these programmes are conducted in our head office and involve specialized training with our experts.

Apron Consults Ltd also conduct numerous training programmes on the ground level. We offer Management, Supervisory, Safety and Craft Training programmes to enhance the competencies of our employees. We also offer “on the job training” when specific skills are required for a particular project. Apron Consults Ltd is working on setting up a Training School where plumbers, electricians, welders etc. will be trained and qualified.

Apron Consults Ltd initiatives in training and development have significantly boosted the morale of our Nigerian employees.

Apron Consults Ltd shall maximize local indigenous employment of worthy employment (Engineers, skilled and unskilled workers). During the recruitment exercise, Apron Consults Ltd shall give preference to Nigerians.

Apron Consults Ltd shall during recruitment consult the Council for the Regulation of Engineering in Nigeria, (COREN), Nigerian Society of Engineers (NSE) Nigerian Institute of local Content (NILC) and other professional bodies and stakeholder to source for competent and capable Nigerians / engineers that can perform effectively.

Development of Indigenous Labour/Help Hands

During the contractual period Apron Consults Ltd shall first and foremost employ competent community based labour workforce, most often, this is mostly unskilled, therefore the next plan of action is transform these unskilled community workers to skilled workers during the project.

In order to maximize and increase the Nigerian Content in-country, Apron Consults Ltd shall:

- Search for experience Nigerians and encourage sub-contractors to engage them in project execution positions
- Increase the number of Nigerians in each project discipline / skill pool through training, exposure and certification thus making them available for other major projects.

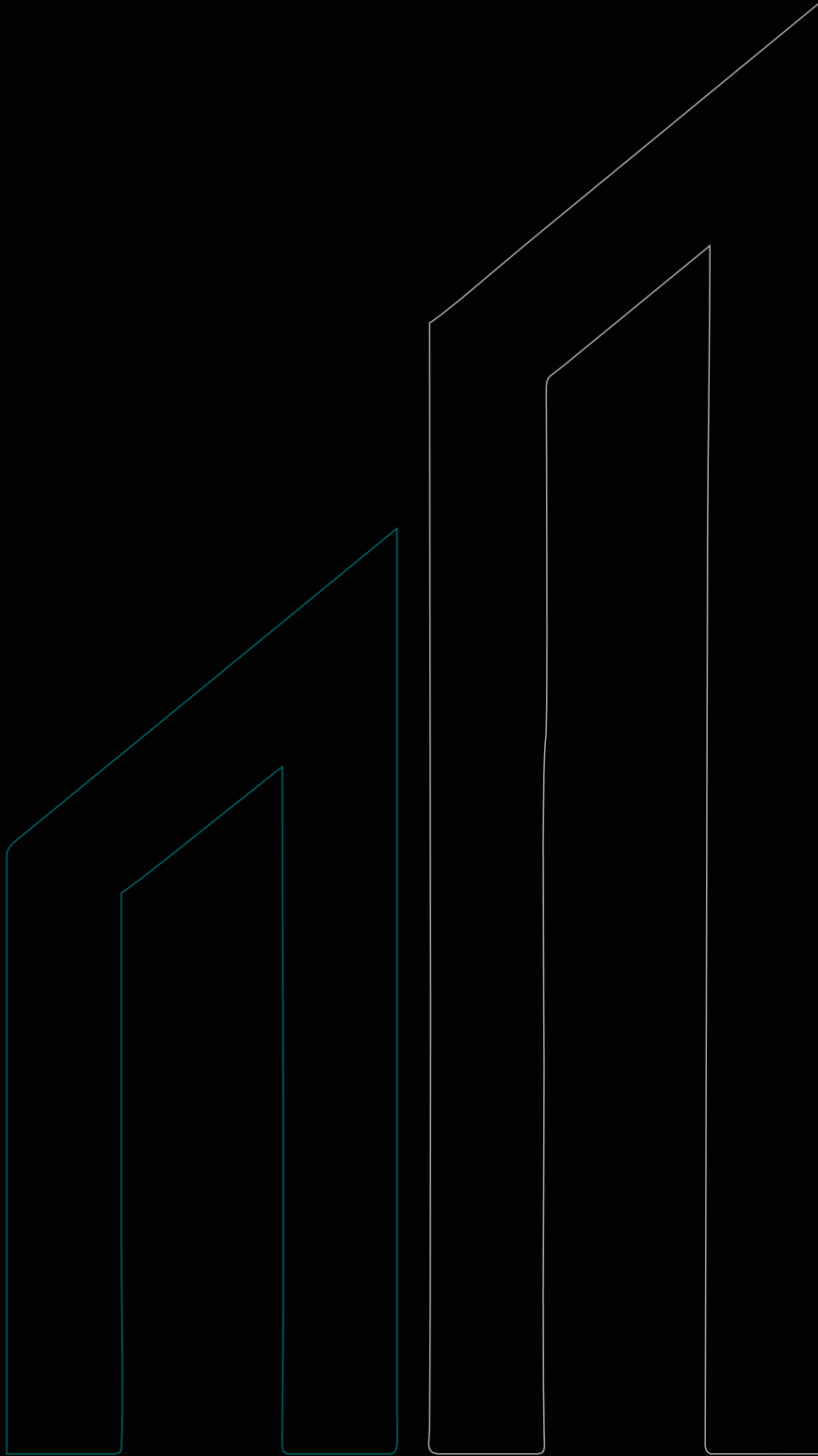
Planning for motivating and training the work force to meet new technology and performance standards are relating corporate change, new technologies, work procedures to manpower planning and development.

Training Plan and Competence

Training and Development plans will cover the establishment of training facilities and externally accredited training programs for the development of skills and competence amongst local labour hired for the work. The programs shall cover all skills required for the work, specifically including inspections methods, engineering, design, procurement, logistics, testing methods, commissioning and project management.

Conclusion

The enforcement of this policy shall be the responsibility of the Principal Consultant/Chief Executive Officer. The Management, all and sundry shall work assiduously to abide by the abovementioned policy and improve in our key performance indicators.



OFFICE ADDRESS:

SUITE 126 FIRST FLOOR, MIDEL
CENTRE, PLOT 14, OFF OLADIPO
DIYA WAY, GUDU - DISTRICT,
ABUJA - FCT.



aptronconsultsltd@gmail.com
info@aptronconsults.ng



www.aptronconsults.ng



+234 (0) 803 609 1552
+234 (0) 805 611 0680